



THE **WALL HOUSING**

WITH 360° ELBOW ROOM



FROM THE **INSIDE OUT** AND **ALL AROUND**

THE **GAMECHANGER**

Who says network installation has to be complicated? X-Rack is the simple solution! The depth-adjustable wall-mounted housing provides significant relief in everyday working life - quicker installation, neatly organized and completely stress-free.

Thanks to its sophisticated design with adjustable rear frame and precisely fitting cladding, the X-Rack offers maximum flexibility: you can adjust the depth exactly to your requirements - for free movement space and optimum access to the components from all sides during installation.

The result: better working conditions, less effort, more efficiency - and an all-round professional result.

The outer cover of the X-Rack fits the backframe with millimeter precision - for an all-round clean look and secure hold. The assembly? A real lightweight - in the truest sense of the word. Thanks to its sophisticated design, the X-Rack can be assembled effortlessly by just one person. And transportation is also child's play: the low weight makes you independent - lift, carry, assemble - without any help.

FLEXIBILITY.

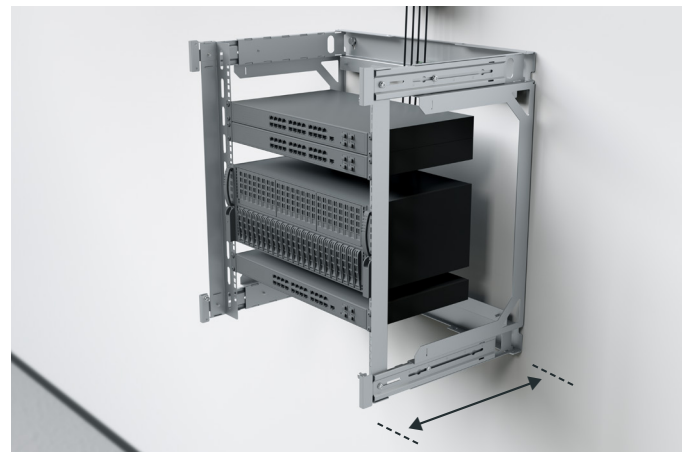
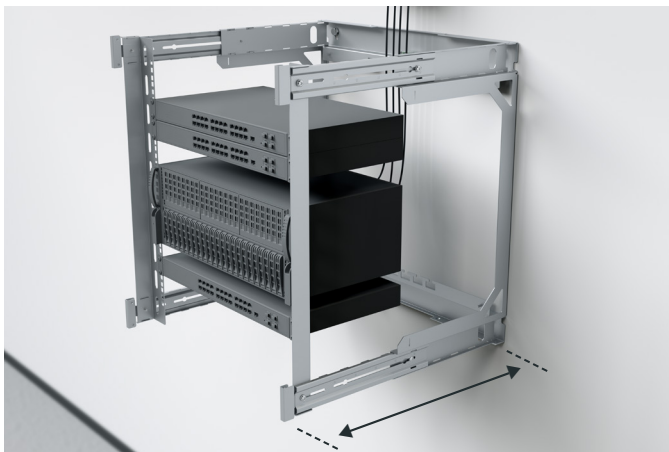
FROM THE INSIDE TO THE OUTSIDE

The back frame is also a
drilling template

Adjustable depths
are marked
(400 - 450 - 500 - 550 - 600 mm)

19" profiles at the front can be
adjusted in depth, additional profiles are
mounted at the rear.

Foldable and
no loose screws



Extendable: Provides optimum elbow room and free space during installation.

5 DEPTHS.

1 WALL HOUSING.

The door can be hinged on the **right** and **left**, **height-adjustable** and therefore closes always perfectly.

The outer cover can be installed and removed in **less than 1 minute**

Unique housing earthing:
Only one earthing cable to the door



Push in: The installation takes up a minimum of space for the customer

BUILT ON INSIGHT



SIMPLE INSTALLATION 1 INSTALLER, 2 STEPS

The process consists of just two steps: mounting and attaching the outer cover. To do this, you use the individual parts that can be easily connected.



UNIQUE FLEXIBILITY SPACE FOR EVERYTHING - EVEN FOR YOU

The flexible depth of the X-Rack makes access to the installation area particularly easy. You can adjust the depth of both the backframe and the outer cover (400-600 mm). Pull everything out while you are working and simply push it back in when the job is done.



ECONOMIC EFFICIENCY TIME IS MONEY

Fast transport and installation, saving time and labor: This makes the wallrack an investment that can keep pace with the development of your business for years to come.



OPTIMIZED LOGISTICS NO HASSLE

With the X-Rack, you no longer have to worry about transportation. You can easily carry the packages on your own. The wallrack is also easy to store as it is packed in two identical, flat packages that are so small that they even fit in a normal car trunk.



GROWTH WITH X-RACK DEVELOPED FOR THE FUTURE

All installations grow over time. X-Rack is designed for quick and easy depth adjustment. X-Rack is made to grow.

GET THE **GAMECHANGER** WITH 360° ELBOW ROOM NOW

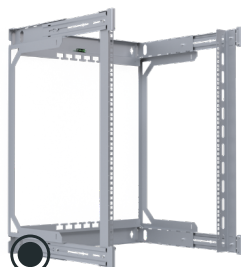


As a ready-made set with back frame, outer cover and door or can be put together individually.

HOW HIGH MAY IT BE?

9, 12 and 15 HE

Available in gray and black



BOX 1
BACKFRAME



BOX 2
OUTER COVER



BOX 3
GLASS DOOR



DISCOVER ALL INFORMATION
ABOUT THE X-RACK, VIDEOS AND ASSEMBLY INSTRUCTIONS

Arrange a free consultation or buy your suitable variant directly!

