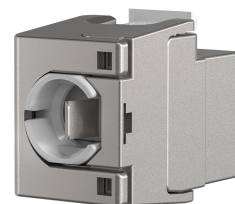
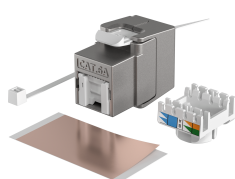


DATASHEET

RJ45 Shortbody Keystone STP, Cat.6A 500MHz with internal shutter



General data

The high quality of the RJ45 Shortbody Keystone Module ensures very good characteristics for 10 Gigabit Ethernet applications. Special tools are not required. The assembly is quick and easy. With the RJ45 module you get a fully shielded module, which offers you good services in your network installation for a long time. Due to its short installation depth of 30.5mm, installation in flush boxes and in limited spaces is even easier compared to standard keystones

Properties:

Installation depth of only 30.5mm

Compact cable pre-sorter for AWG22/1 ... AWG26/1

Pair management according to TIA/EIA 568 A/B colour codes (colour code printed on the cable pre-sorter)

Suitable for distribution panels and support rings with keystone breakout

Scope of supply:

1 x RJ45 Keystone, installation manual (English)

Technical properties

360° shield contact	False
4PPOE certified	True

This datasheet was created automatically on 13-05-2026 . Technical changes reserved.



DATASHEET

RJ45 Shortbody Keystone STP, Cat.6A 500MHz with internal shutter

AWG-range	26 - 22
Cable diameter	8.5 mm
Casing material	Zinc die cast
Category	6A (TIA)
Complaint to UL94	V-0
Connection type	Insulation displacement connector
Contact Resistance	< 10 mΩ
Contact coating	50 μ"
Current capacity	1.5 A
Dielectric Withstanding Voltage	1000 V AC 60Hz
Dust cover	true, with internal shutter
For UAE suitable	False
Insertion force	≤ 30 N
Insulation Resistance	≥ 500 MΩ
Mating cycles	≥ 750
Model	jack
Operating Temperature	-10 - 60 °C
Screened	True
Shield contact and strain relief separate	True
Special tool necessary	False
Suitable for degree of protection (IP)	IP20
Suitable for flat cable	False
Suitable for litz wire conductor	False
Suitable for round cable	True
Suitable for solid core	True
Type of connector	RJ45 8(8)
Type of locking	Latching mechanism

Available variants

ArtNr.	Bezeichnung	Color
E-20093	RJ45 Shortbody Keystone STP, Cat.6A 500MHz with internal shutter	metall

This datasheet was created automatically on 13-05-2026 . Technical changes reserved.

